



Technical Reference Manual – Data Areas



May 2017

Contents

Introduction	3
E.....	4
EXA	4
EXB	11
EXC	12
EXD	16
EXE.....	19
EXF.....	25
EXI	27
EXJ	30
EXK	31
EXL.....	32
EXM	33
EXP	34
EXR	36
EXS.....	39
EXT.....	43
EXU	51
EXW	52
F.....	53
R	55
S.....	55
U.....	56
W	57
X	57
Y.....	58
Z.....	61

Introduction

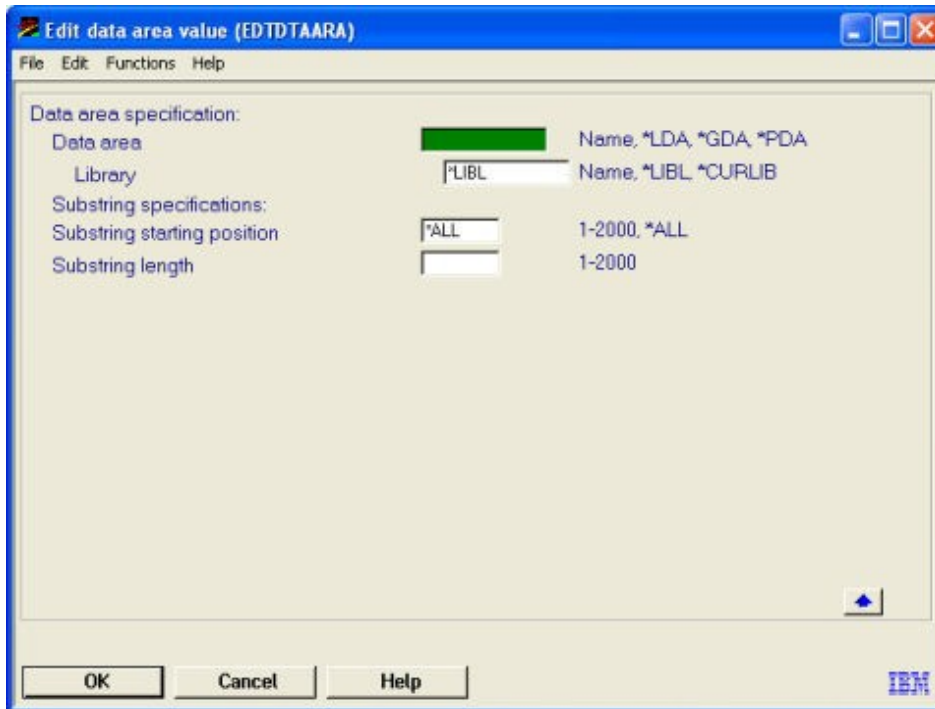
This chapter contains a listing of data areas. For each, the following information is provided:

Text	the description of the data area
Desc	a description of the purpose and usage of the data area
Type	the type of the data area
Length	the length of the data area
Value	the shipped value of the data area

The **Work with Data Areas** command (WRKDТАARA) allows you to display a list of data areas from one or more libraries. There are a few restrictions:

- only libraries to which you have **USE** authority will be searched.
- only data areas to which you have some authority will be displayed.
- to perform operations on data areas, you must have (1) **USE** authority to the command used by the operation and (2) appropriate authority to the data areas on which the operation is to be performed.

The **Edit data area value** command (EDTDTAARA) allows you to customize a data area.



E

EVMGFLA

Text	Name of default message file
Desc	
Type	*CHAR
Length	10
Value	EXTMSGF

EXA

EXACKTBL

Text	Code table for FA message classes
Desc	Contains the names of the message classes used for the various types of functional acknowledgement messages which may be generated.
Type	*CHAR
Length	10
Value	L_ALG_FAMC

EXACKUNW

Text	This data area controls processing of acknowledgements within the unwrapping process.	
Desc	Position	Description
	1	Allow generation of ack when TPMC missing
	2	Force unwrap error if generating a "Rejected" message level ack
	3	Allow normal ack status processing at msg level when dup checking is requested.
	4	reserved for additional message level controls
	5	reserved for additional message level controls
	6	Allow generation of ack for unsupported group and group end error
	7	Allow generation of ack for version level error
	8-10	reserved for additional group level controls
Type	*CHAR	
Length	10	
Value	(Y/N) depending on controls requested	

Technical Reference Manual – Data Areas

EXADDCOD

Text	Add to code table Y/N
Desc	Used to control the automatic code table entry feature. Y causes missing entries to be automatically placed into code tables during translation. N turns this feature off.
Type	*CHAR
Length	1
Value	Y

EXADDCODAS

Text	Add to code table App->Std: first char
Desc	Specifies the first character of the automatic code table entry made during outgoing (application-to-standard) translation, if the EXADDCOD parameter is Y .
Type	*CHAR
Length	1
Value	!

EXADDCODSA

Text	Add to code table Std->App: first char
Desc	Specifies the first character of the automatic code table entry made during incoming (standard-to-application) translation, if the EXADDCOD parameter is Y .
Type	*CHAR
Length	1
Value	?

Technical Reference Manual – Data Areas

EXADDDBG

Text	ADDMBR fail: 1:Y=mbr(*NONE) 2:Y=mbr(*ALL)
Desc	
Type	*CHAR
Length	10
Value	YNNNNNNNNN

EXADDMMSGQ

Text	ADDMBR message queue(1-10) in library(11-20)
Desc	
Type	*CHAR
Length	20
Value	*NONE

EXADDTRIES

Text	Number of tries for ADDMBR before fail
Desc	
Type	*DEC
Length	5 0
Value	30

EXADDWAIT

Text	ALCOBJ wait time for ADDMBR (seconds)
Desc	
Type	*DEC
Length	5 0
Value	3

Technical Reference Manual – Data Areas

EXALWEXIT

Text	Enable F3=Exit from main menu
Desc	Specifies whether the F3 (Exit) function key is enabled on the Main menu.
Type	*CHAR
Length	4
Value	*YES

EXALWNWCHG

Text	Allow nonwrapped data change Y=Yes, N=No
Desc	Specifies whether users are allowed to edit non-wrapped EDI data on the Display Element Data panel.
Type	*CHAR
Length	1
Value	Y

EXASFLG

Text	Translate App->Std flags	
Desc	Position	Description
	1	Y ="Suppress normal completion messages" and N ="Send completion message for each EDI message"
	2	Y ="Only update log of message after translation" and N ="Update log of message at start and end of each EDI message"
	3	Y ="Only log 'code table entry not found' if both element and segment are mandatory", and

Technical Reference Manual – Data Areas

		N="Log all 'code table entry not found' in translation error log, even if optional"
	4-9	are unused.
	10	Write to statistics file
Type	*CHAR	
Length	10	
Value	YYYYNYYYYY	

EXAUTCT

Text	Authority token for Code Tables
Desc	
Type	*CHAR
Length	300
Value	<p>A user's authority to this object will determine their authority to edit Extol code tables.</p> <p>*OBJOPR is required for any code table access.</p> <p>*CHANGE allows update of tables with lock code " "</p> <p>*OBJMGT allows update of tables with lock code "A"</p> <p>(Only Extol may update tables with lock code "L")</p>

EXAUTHLIST

Text	Authority list/user profile activation
Desc	
Type	*CHAR
Length	10

EXAUTOMAP

Value	INNNNNNNNN
Text	Automatic mapping options
Desc	
Type	*CHAR
Length	10
Value	NN000NNNN

EXB

EXBGPRIOR	Text	BG search priority: 1=BG01 sender; 3=BG03 sender
	Desc	
	Type	*CHAR
	Length	1
	Value	3

EXBISACF	Text	Export BISAC to LIB-FILE-MBR (3 x 10)
	Desc	
	Type	*CHAR
	Length	30
	Value	*NONE

EXBISACR	Text	*REPLACE or *ADD rcds to BISAC export file
	Desc	
	Type	*CHAR
	Length	8
	Value	*ADD

EXBISACS	Text	BISAC status after unwrap (blank=normal)
	Desc	
	Type	*CHAR
	Length	1
	Value	

EXC

EXCDTFIL	Text	Communication data copy to file(1-10) in library(11-20)
	Desc	Specifies the file name (in positions 1-10) and the library name (in positions 11-20) into which non-EDI data from a communications session is to be placed.
	Type	*CHAR
	Length	20
	Value	

EXCDTPGM	Text	Comm data call program(1-10) in library(11-20)
	Desc	Specifies the program name (in positions 1-10) and the library name (in positions 11-20) of a program to be called when non-EDI data from a communications session is placed in the file specified by data area EXCDTFIL.
	Type	*CHAR
	Length	20
	Value	*NONE

EXCHBLNK	Text	Replacement character for embedded blanks
	Desc	(Please note that the shipped Value is a period.)
	Type	*CHAR
	Length	1
	Value	.

Technical Reference Manual – Data Areas

EXCHKACKQ

Text	Acknowledgements message queue name
Desc	
Type	*CHAR
Length	10
Value	EXCHKACKQ

EXCHKTRIES

Text	Nbr of CHKOBJ tries for ADD/RMVMBR before fail
Desc	
Type	*DEC
Length	5 0
Value	100

EXCHKWAIT

Text	CHKOBJ wait time for ADD/RMVMBR (seconds)
Desc	
Type	*DEC
Length	5 0
Value	3

EXCHNOND

Text	Replacement character for non-displayable chars
Desc	
Type	*CHAR
Length	1
Value	¢

Technical Reference Manual – Data Areas

EXCMDENT

Text	Allow command entry from menus
Desc	Specifies if a command line is available on Cleo EEI menus.
Type	*CHAR
Length	4
Value	*YES

EXCMNJOB

Text	Name of job description for communications jobs
Desc	Specifies the name of the job description for EXTOL Integrator communications jobs.
Type	*CHAR
Length	10
Value	EXCMNJOB

EXCOMPACT

Text	Default COMPACT parameter for save
Desc	
Type	*CHAR
Length	4
Value	*DEV

EXCONNDFT

Text	EXTOL default ascending/descending view for conn
Desc	Controls the default view shown when first entering Work with connections. The values can be: D (Descending by date/time), N (connection log Number), or any other value defaults to ascending by date/time.
Type	*CHAR
Length	1
Value	D

Technical Reference Manual – Data Areas

EXCTSDV

Text	Code table source default value
Desc	
Type	*CHAR
Length	20
Value	*OTHERWISE

EXCTTDVI

Text	Code table target default value - return input
Desc	
Type	*CHAR
Length	20
Value	*RETURN INPUT

EXCTTDVN

Text	Code table target default value - return null
Desc	
Type	*CHAR
Length	20
Value	*RETURN NULL

EXCTTDVQ

Text	Code table target default value - return qualifier
Desc	
Type	*CHAR
Length	20
Value	*RETURN QUAL

EXD

EXDBG

Text	1:Y=dspjob 2:Y=dspjoblog 3:Y=dmpclpgm
Desc	Specifies whether certain debugging aids are turned on during a translation job. They are: DSPJOB, DSPJOBLOG, and DMPCLPGM.
Type	*CHAR
Length	10
Value	NNNNNNNNNN

EXDEV

Text	Default DEV parameter for save and restore
Desc	Specifies the default device parameter for save and restore commands.
Type	*CHAR
Length	10
Value	TAP01

EXDLTDAQ

Text	DLTDTA message queue name
Desc	
Type	*CHAR
Length	10
Value	EXDLTDTA

EXDLTMSGQ

Text	EXTOL Delete Message Queue Control
Desc	Controls the deletion of the message queues. Position 1: Controls the deletion of the Connection Message Queue - D=dlt always; E=keep if err; K (or any other value)=keep
Type	*CHAR
Length	10
Value	K

Technical Reference Manual – Data Areas

EXDMPLMT	Text	Debug dump operation limit
	Desc	Specifies the number of CL program dumps performed when the DMPCLPGM debugging is turned on during a translation job by data area EXDBG.
	Type	*DEC
	Length	3 0
	Value	5
EXDSPGIFMT	Text	Display date format for W/W group/interchange
	Desc	Controls the date display format in the Work with all interchanges by trading partner and Work with all groups by trading partner screens.
	Type	*CHAR
	Length	3
	Value	YMD
EXDTACPR	Text	Default DTACPR parameter for save
	Desc	Specifies the default data compression parameter for save and restore commands.
	Type	*CHAR
	Length	4
	Value	*YES
EXDWDIR	Text	Download directory name for Visual Map
	Desc	Specifies the IFS directory into which download information associated with the <i>Visual Mapper</i> feature is placed.
	Type	*CHAR

Technical Reference Manual – Data Areas

Length	100
Value	/extol/vm/dwndir

EXE

EXECLISEP

Text	Envelope classes, intchg separators, Ins/Rpl
Desc	
Type	*CHAR
Length	130
Value	X1220R 9C.....R.....

EXECODPAG

Text	Code page used for e-mail copy to stream file
Desc	
Type	*CHAR
Length	11
Value	00367

EXEDTAQ

Text	EXTOL e-send data queue
Desc	
Type	*CHAR
Length	10
Value	EXEMAILDQ

**EXEFL
DMP**

Text	External file lookup-file/format dump		
Desc	Controls dumping of the program. Dump occurs at entry point and return point.		
	<u>Position</u>	<u>Value</u>	<u>Definition</u>
	01-10	*ALL	Dump program on all calls to it

EXEFLFLG

Text	External File Lookup Flags
Desc	<p>Position 1 is Y/N, with the default as Y. On a failed lookup, for all "FS" fields in the invalid lookup buffer, map the corresponding "FD" field with its NULL value.</p> <p>Possible use:</p> <p>Inbound: Instance 1 of an element is mapped to a field. Instance 2 is mapped to a key of a lookup file. A field from the lookup file is mapped to the same field as Instance 1. If the flag is set to N and the lookup fails, the mapped to field will still contain the contents of the Instance 1 mapping.</p> <p>Outbound: reciprocal of Inbound</p>
Type	*CHAR
Length	10
Value	YNNNNNNNNNN

EXEKEEP

Text	EXTOL e-mail keep dir,splf,lnk: N/Y
Desc	
Type	*CHAR
Length	1
Value	Y

EXEMAILDIR

Text	EXTOL e-mail directory
Desc	
Type	*CHAR
Length	50
Value	/exemail

EXEMATCCDE

Text	e-mail attachment code
Desc	
Type	*CHAR
Length	4
Value	AT

EXEMFRACDE

Text	e-mail from address code
Desc	
Type	*CHAR
Length	4
Value	FA:

EXEMFRNCDE

Text	e-mail from name code
Desc	
Type	*CHAR
Length	4
Value	FN:

EXEMMSGCDE

Text	e-mail message code
Desc	
Type	*CHAR
Length	4
Value	MG:

EXEMSBJCDE

Text	e-mail subject code
Desc	
Type	*CHAR
Length	4
Value	SB:

EXEMTOACDE

Text	e-mail to address code
Desc	
Type	*CHAR
Length	4
Value	TA:

EXEMTONCDE

Text	e-mail to name code
Desc	
Type	*CHAR
Length	4
Value	TN:

EXENDOPT

Text	Default ENDOPT parameter for save and restore
Desc	Specifies the default end operation parameter for save and restore commands
Type	*CHAR
Length	7
Value	*REWIND

EXENVUSAGE

Text	Default envelope usage convention
Desc	
Type	*CHAR
Length	1
Value	

EXENVWRP

Text	Print envelope/wrap reports Y(es)/N(o)/E(rror)
Desc	Controls the printing of the envelope/wrap reports. The values can be: Y (always print the reports), N (never print the reports), or E (print only if the step Envelope/wrap ends in error).
Type	*CHAR
Length	1
Value	Y

EXEOUTQ

Text	EXTOL e-mail outq
Desc	
Type	*CHAR
Length	10
Value	EXEMAILQ

EXEXPDATE

Text	Default EXPDATE parameter for save
Desc	Specifies the default expiration date parameter for save and restore commands.
Type	*CHAR
Length	6
Value	*PERM

EXF

EXF3SIGNOF	Text	Execute SIGNOFF on F3 from main menu
	Desc	Specifies if function key F3 signs off the current session when pressed from the Main menu.
	Type	*CHAR
	Length	4
	Value	*NO

EXFAXLIB	Text	Fax product library
	Desc	
	Type	*CHAR
	Length	10
	Value	FASTFAX

EXFLIGSL	Text	Fixed-length ind grp/"segment ID" length to skip
	Desc	
	Type	*CHAR
	Length	20
	Value	NBGRVH 3033430000

EXFLTPGM	Text	Communication filter program(1-10) in library(11-20)
	Desc	
	Type	*CHAR
	Length	20
	Value	*NONE

Technical Reference Manual – Data Areas

EXFOUTQ

Text	EXTOL fax library/outq
Desc	
Type	*CHAR
Length	20
Value	FASTFAX FFXOTQAPI

Technical Reference Manual – Data Areas

EXISAWF

	32120000
Text	Export ISA-W to LIB-FILE-MBR (3 x 10)
Desc	
Type	*CHAR
Length	30
Value	*NONE

EXISAWR

Text	*REPLACE or *ADD rcds to ISA-W export file
Desc	
Type	*CHAR
Length	8
Value	*ADD

EXJ

EXJSLARA

Text	Last session control number
Desc	
Type	*DEC
Length	7 0
Value	0

EXK

EXKEXKLN

Text	Kleinschmidt APPC setup parameters	
Desc		
Type	*CHAR	
Length	600	
Value	KLEINSCHMIDT	= Network ID (15)
	KLNSNARCV	= Script name (10)
	KLNSN2	= Network port (6)
		= Script parms (30)
	KLNSNA2	= device desc
	YYYYYYYYYYY	= EXDBG
	*LRLOG	= CTLLR parameter
	*NONE	= PGM to call
	*NOSUBMIT	= JOBID to submit
	*TRN	= condition for pgm
	*ICF	=trace *ICF/*NONE
	X	=

EXL

EXLICEXP

Text	Days to warn before license expiration
Desc	
Type	*DEC
Length	15 0
Value	15

EXLLWNXT

Text	Resend work member - last member #
Desc	
Type	*DEC
Length	9 0
Value	1

EXVLCKAS

Text	External format level check App->Std ap file
Desc	Specifies if the external format level check for outgoing (application-to-standard) translation is to be performed.
Type	*CHAR
Length	1
Value	Y

EXVLCKSA

Text	External format level check Std->App ap file
Desc	Specifies if the external format level check for incoming (standard-to-application) translation is to be performed.
Type	*CHAR
Length	1
Value	Y

EXM

EXMGFLA	Text	Name of default message file
	Desc	Specifies the default name of the external message file.
	Type	*CHAR
	Length	10
	Value	EXTMSGF
EXMNUENT	Text	Allow direct menu selection with G*
	Desc	Specifies if direct menu selection (entering G* followed by the menu name) is allowed.
	Type	*CHAR
	Length	4
	Value	*YES
EXMSGDIR	Text	Message directory name for Visual Map
	Desc	Specifies the IFS directory into which message information associated with the <i>Visual Mapper</i> feature is placed.
	Type	*CHAR
	Length	100
	Value	/extol/vm/msgdir
EXMSGQLIB	Text	Name of library for temporary message queues
	Desc	Specifies the name of the library where the temporary message queues (separate message queue for each communications and translation job) are contained.
	Type	*CHAR
	Length	10

Technical Reference Manual – Data Areas

EXN

Value	EXTINTMSG5
-------	------------

EXNULLBLNK

Text	Use blank for null in Pgm-described zoned fields
Desc	
Type	*CHAR
Length	1
Value	N

EXP

EXPIPMSGQ

Text	EXTOL Pipeline Message Queue Control
Desc	Controls the behavior of the message queues used in pipelining. Position 1: Controls the deletion of the Connection Message Queue - D=dlt always; E=keep if err; K (or any other value)=keep
Type	*CHAR
Length	10
Value	K

EXPRTCNDV

Text	Print device to print all data after unwrap
Desc	
Type	*CHAR
Length	10
Value	*NONE

EXPRTMSGU

Text	Print messages after unwrap *ALL, *ERROR, *NONE
Desc	
Type	*CHAR

Technical Reference Manual – Data Areas

EXPWRPF

Length	10
Value	*ERROR
Text	EXPWRPDTA setup - export wrapped data
Desc	
Type	*CHAR
Length	500
Value	

EXPWRPLEN

Text	Export wrapped data default rec len for create
Desc	
Type	*DEC
Length	5 0
Value	150

EXR

EXREBLDST	Text	Rebuild existing state table Y/N/R/S
	Desc	Specifies if translator state tables are to be rebuilt automatically when changes are made to a mapping. The only time the state table should not be automatically rebuilt is if manual changes have been made for a special purpose and these changes are to be preserved. The possible values are: Y (rebuild automatically), N (do not rebuild automatically), R (rebuild state tables for incoming translation only automatically), and S (rebuild state tables for outgoing translation only automatically).
	Type	*CHAR
	Length	1
	Value	Y

EXREQDIR	Text	Request directory name for Visual Map
	Desc	Specifies the IFS directory into which request information associated with the <i>Visual Mapper</i> feature is placed.
	Type	*CHAR
	Length	100
	Value	/extol/vm/reqdir

EXRMVDBG	Text	RMVMBRS fail: 1:Y=mbr(*NONE) 2:Y=mbr(*ALL)
	Desc	
	Type	*CHAR
	Length	10
	Value	YNNNNNNNNN

EXRMVMSGQ	Text	RMVMBRS message queue(1-10) in library(11-20)
------------------	------	---

Technical Reference Manual – Data Areas

Desc	
Type	*CHAR
Length	20
Value	*NONE

EXRMVTRIES

Text	Number of tries for RMVMBRS before fail
Desc	
Type	*DEC
Length	5 0
Value	30

EXRMVWAIT

Text	ALCOBJ wait time for RMVMBRS (seconds)
Desc	
Type	*DEC
Length	5 0
Value	3

EXRPLUNPRT

Text	Replace unprintable chars on segment print (hex)
Desc	
Type	*CHAR
Length	2
Value	

EXRSTJOB

Text	Name of job description for submitted restore jobs
Desc	Specifies the name of the job description for EXTOL Integrator restore jobs.
Type	*CHAR

Technical Reference Manual – Data Areas

Length	10
Value	EXSAVJOB

EXRSTTMP

Text	Temporary library for restore functions
Desc	
Type	*CHAR
Length	10
Value	EXSTDTMP

EXS

EXSAFLG

Text	Translate Std->App flags
Desc	Position 1="In data, not in map" ... Y ="Jump back to last good segment" and N ="Force translate error" Positions 2-9 are unused Position 10="Write to statistics file"
Type	*CHAR
Length	10
Value	NYYYYYYYYY

EXSAVCCLNP

Text	Cleanup prior partial save before SAVCNNDTA
Desc	
Type	*CHAR
Length	4
Value	*NO

EXSAVCPRCH

Text	Precheck for new mbrs before rename on SAVCN
Desc	
Type	*CHAR
Length	4
Value	*NO

EXSAVEAPPD

Text	Save application data for viewing: Y/N R=1,S=2
Desc	
Type	*CHAR
Length	10
Value	YN

Technical Reference Manual – Data Areas

EXSAVJOB

Text	Name of job description for submitted save jobs
Desc	Specifies the name of the job description for EXTOL Integrator save jobs.
Type	*CHAR
Length	10
Val*ue	EXSAVJOB

EXSAVMSGQ

Text	Name message queue for SAVACTMSGQ parameter
Desc	
Type	*CHAR
Length	10
Value	EXSAVMSGQ

EXSCDJOB

Text	Default job description name for job scheduler
Desc	
Type	*CHAR
Length	10
Value	EXSCDJOB

EXSCDLIBL

Text	Scheduler-lib list loc: *JOB, *USRDEFINE
Desc	
Type	*CHAR
Length	10
Value	*JOB

EXSCDOUTQ

Text	Scheduler-*INITIAL,*NOCHANGE,*USRPRF,*JOB,name
Desc	
Type	*CHAR

Technical Reference Manual – Data Areas

Length	10
Value	*JOB

EXSCDUSR

Text	Default user profile name for job scheduler
Desc	
Type	*CHAR
Length	10
Value	EXTOLOWN

EXSEFTT

Text	EXTOL - SEF flr doc trans(1-10:A->E,11-20:E->A)
Desc	
Type	*CHAR
Length	20
Value	EXSEFTTAE EXSEFTTEA

EXSEGDLM

Text	Chars >x40 allowed as seg dlm in GS-only search
Desc	
Type	*CHAR
Length	80
Value	âäåãäçñ éêëèíîïììß-ÀÁÂÃÄÅÇÑ ÉÊËÈÍÎÏÌ«»ðýþª³œ,œœ;¿Ð ÝÞ®£¥·©§¶¼½¾[]-''´×øöðóó²ÔÕÖÓÕ~

EXSEGDLMO

Text	Chars >x40 allowed as seg dlm in GS-only search
Desc	
Type	*CHAR
Length	80
Value	âäåãäçñ éêëèíîïììß-ÀÁÂÃÄÅÇÑ ÉÊËÈÍÎÏÌ«»ðýþª³œ,œœ;¿Ð

EXSIGNOFF

	ÝP@£¥•©\$¶¼¾[]-''×ööööö²öööööö
Text	SIGNOFF command LOG value (*LIST,*NOLIST)
Desc	Specifies the Sign Off command (SIGNOFF) log value. The possible values are *LIST and *NOLIST .
Type	*CHAR
Length	7
Value	*NOLIST

EXSNDPATH

Text	Default send path for linked files
Desc	
Type	*CHAR
Length	256
Value	/QopenSys/EXTOLsnd/

EXSTRSBS

Text	Subsystem to start on send commands
Desc	Specifies the name of a subsystem (such as QSNADS) to be started when the EXTOL send object commands (for example: SNDTP, SNDMC, SNDCNNDTA) are used.
Type	*CHAR
Length	10
Value	*NONE

EXT

EXTA1FLG

Text	This data area is used to control TAl processing in Cleo EEI.	
Desc	Position	Description
	1	Process TAl segments (Y/N)
	2	Send TAl responses to unknown trading partners (Y/N)
	3	Allow send of interchange with TAls only, no messages (Y/N)
	4	*Remaining flags 4 - 10 not used*
Type	*CHAR	
Length	10	
Value	(Y/N)	

EXTDOCLIB

Text	Name of library for program documentation file
Desc	Specifies the name of the library for the program documentation file.
Type	
Length	
Value	*LIBL

EXTDOCSRC

Text	Name of program documentation source file
Desc	Specifies the name of the program documentation source file.
Type	*CHAR
Length	10

Technical Reference Manual – Data Areas

	Value	EXTDOCSRC												
EXTFILLIB	Text	Name of library for Cleo system files												
	Desc	Specifies the name of the library for the EXTOL system files.												
	Type	*CHAR												
	Length	10												
	Value	EXTSYSF_50												
EXTGFAU	Text	Generic file "Add/Update" function control flags												
	Desc	Controls the usage of the "Record Update" feature. All five positions are Y or N values:												
		<table border="1" style="width: 100%; border-collapse: collapse;"> <thead> <tr> <th style="width: 30%;">Position</th> <th>Description</th> </tr> </thead> <tbody> <tr> <td style="text-align: center;">1</td> <td>"Add allowed"</td> </tr> <tr> <td style="text-align: center;">2</td> <td>"Flag as translation error if add fails"</td> </tr> <tr> <td style="text-align: center;">3</td> <td>"Update allowed"</td> </tr> <tr> <td style="text-align: center;">4</td> <td>"Flag as translation error if record not found when performing update"</td> </tr> <tr> <td style="text-align: center;">5</td> <td>"Flag as translation error if update fails when performing update"</td> </tr> </tbody> </table>	Position	Description	1	"Add allowed"	2	"Flag as translation error if add fails"	3	"Update allowed"	4	"Flag as translation error if record not found when performing update"	5	"Flag as translation error if update fails when performing update"
	Position	Description												
	1	"Add allowed"												
	2	"Flag as translation error if add fails"												
	3	"Update allowed"												
4	"Flag as translation error if record not found when performing update"													
5	"Flag as translation error if update fails when performing update"													
Type	*CHAR													
Length	5													
Value	NYNNY													
EXTOLJOB	Text	Name of default job description												
	Desc													

Technical Reference Manual – Data Areas

	Type	*CHAR
	Length	10
	Value	EXTOLJOB
EXTOUSRID	Text	Default TOUSRID for SNDxxx commands
	Desc	Specifies the user ID and address used as the default for the EXTOL send object commands (such as SDCNNDTA).
	Type	*CHAR
	Length	16
	Value	EXTOLWNEXTOLW
EXTPCB	Text	Translators use pre-computed buffers(Y/N)
	Desc	For usage on the in-bound translator, when set to Y this system value shortens the translation time for non-mapped numeric database fields (the biggest gains are for packed numeric data).
	Type	*CHAR
	Length	1
	Value	Y
EXTMBRWRN	Text	Max mbrs 1-5 limit; 6-25 send to queue/lib
	Desc	Data area EXTMBRWRN will contain the user-defined threshold in positions 1 through 5. Positions 6 through 8 should contain PGM as an indication that the message is to be returned to this program so that it may be further passed via email using EXENOTE.
	Type	*CHAR
	Length	25
	Value	00520PGM

Technical Reference Manual – Data Areas

EXTPMSALL

Text	Substitution value for *ALL TPMC search
Desc	Specifies the substitution value for *ALL in a trading partner message class search.
Type	*CHAR
Length	35
Value	*ALL

EXTPSALL

Text	Substitution value for *ALL trd pnr search
Desc	Specifies the substitution value for *ALL in a trading partner search.
Type	*CHAR
Length	35
Value	*ALL

EXTPSSEQ

Text	Search sequence for Trd pnr *ALL values
Desc	Specifies the search sequence for trading partner with *ALL values.
Type	*CHAR
Length	24
Value	* * * * * * * * * *

EXTPVIEW

Text	Trading partner default view
Desc	
Type	*CHAR
Length	1
Value	I

Technical Reference Manual – Data Areas

EXTQCPFMSG

Text	Message file for OVRMSGF of QCPFMSG
Desc	
Type	*CHAR
Length	10
Value	EXTQCPFMSG

EXTRANSCHD

Text	Default translation job scheduling msgq
Desc	
Type	*CHAR
Length	10
Value	TRNJOBSCHD

EXTRNERR

Text	Translate partial messages in error Y/N
Desc	Specifies whether partial messages which are translated with errors during incoming translation are to be written to the application files when the file set type is a split to multiple
Type	*CHAR
Length	1
Value	N

EXTRNJOB

Text	Name of job description for submitted trans jobs
Desc	Specifies the name of the job description for EXTOL Integrator translation jobs.
Type	*CHAR
Length	10
Value	EXTRNJOB

EXTSTDLVL

Text	EXTOL EDI standards installed
-------------	-------------------------------

Technical Reference Manual – Data Areas

Desc	
Type	*CHAR
Length	300
Value	EXTSTD022 S2000087A X12->004030;UCS/WINS->003070;UN/EDIFACT->D97A 000327

EXTST1

Text	Self-test APPC setup parameters
Desc	
Type	*CHAR
Length	600
Value	EXTST = Network ID (15) SNARCV01 = Script name (10) EXTST = Network port (6) = Script parms (30) EXTST1 = device desc NNNNNNNNNN = EXDBG *LR = CTLLR parameter *NONE = PGM to call *NOSUBMIT = JOBID to submit *TRN = condition for pgm *ICF = trace options EXTSYS = Extol system lib

EXTST2

Text	Self-test APPC setup parameters
-------------	---------------------------------

Technical Reference Manual – Data Areas

Desc	
Type	*CHAR
Length	600
Value	EXTST = Network ID (15) SNARCV01 = Script name (10) EXTST = Network port (6) = Script parms (30) EXTST2 = device desc NNNNNNNNNN = EXDBG *NLR EXTST2END = CTLR parameter *NOTRANS = PGM to call *NOSUBMIT = JOBD to submit *TRN = condition for pgm *ICF = trace options EXTSYS_50 EXTSYSF_5 EXTDEMOFIL = syslib;user libs

EXTST2END

Text	Set to non-blank to end EXTST2 prestart job
Desc	
Type	*CHAR
Length	10
Value	

EXTSYSLIB

Text	Name of library for EXTOL system programs
Desc	Specifies the name of the library for EXTOL Integrator system programs.
Type	*CHAR
Length	10
Value	EXTSYS_50

EXTSYSLVL

Text	EXTOL system level control values
Desc	
Type	*CHAR
Length	300
Value	P2001073R F2001031R I2001074R V5R0M0000

EXTSYSLVLF

Text	EXTOL system level control values
Desc	
Type	*CHAR
Length	300
Value	P2001073R F2001031R I2001074R V5R0M0000

EXU

EXUPLDIR	Text	Upload directory name for Visual Map
	Desc	Specifies the IFS directory into which upload information associated with the <i>Visual Mapper</i> feature is placed.
	Type	*CHAR
	Length	100
	Value	/extol/vm/upldir
EXUSRARA	Text	User control
	Desc	
	Type	*CHAR
	Length	10
	Value	
EXUSRMNU	Text	Initial user menu to display
	Desc	
	Type	*CHAR
	Length	10
	Value	*NONE
EXUSRMSG	Text	Name of message file for user-defined messages
	Desc	Specifies the name of the message file for user-defined messages which are used by trading partner message class override commands implemented as message descriptions.
	Type	*CHAR
	Length	10
	Value	EXUSRMSG

EXW

EXWRKCNDY	Text	N: Show connections for past N days
	Desc	Controls the date which is placed in the date/time positioner field of the Work with connections panel when the program is started. The value placed in this data area is the number of days prior to the current day to which the positioner is set. The special value -9999 will set the positioner to 00/00/00 00:00.
	Type	*DEC
	Length	5 0
	Value	1850

F

FAXCNCDE	Text	Fax company name to send to code
	Desc	
	Type	CHAR
	Length	5
	Value	*FC

FAXINCDE	Text	Fax individual name to send to code
	Desc	
	Type	CHAR
	Length	5
	Value	*FI

FAXSNCDE	Text	Fax sender name code
	Desc	
	Type	CHAR
	Length	5
	Value	*SD

FAXTOCDE	Text	Fax phone # to send to code
	Desc	
	Type	CHAR
	Length	5
	Value	*FN

FDMGFLA

Text	Name of default message file
Desc	
Type	*CHAR
Length	10
Value	FDMSGF

R

RCVJOB

Text	
Desc	
Type	*CHAR
Length	100
Value	EXTBSCFC RCV2 0100511280307/EXTLOWN/DSP31

S

SFSTSDATO

Text	*OPT Standards data - saved from library name
Desc	
Type	*CHAR
Length	100
Value	/AS400/SEQ06/STDSDATA.;1

U

UMSGCTX	Text	Initial test for loop delay value calibration
	Desc	
	Type	*DEC
	Length	8 0
	Value	5000

UMSGDLX	Text	Message delay target value
	Desc	
	Type	*DEC
	Length	10 4
	Value	.1000

W

WRPCHR1	Text	Wrapped character replacement #1
	Desc	
	Type	*CHAR
	Length	42
	Value	0142

WRPCHR2	Text	Wrapped character replacement #2
	Desc	
	Type	*CHAR
	Length	42
	Value	0115

X

XSSNSTS	Text	Status of last IBM Global network connection
	Desc	
	Type	*CHAR
	Length	5
	Value	00000

Y

YMHPFLA	Text	Name of help text file
	Desc	
	Type	*CHAR
	Length	10
	Value	EXTHLPSRC

YMHPIXA	Text	YDSPHLP UIM Help Index for Mode(*UIM)
	Desc	
	Type	*CHAR
	Length	10
	Value	*NONE

YMHPLBA	Text	Name of help text file library
	Desc	
	Type	*CHAR
	Length	10
	Value	*LIBL

YMHPOPA	Text	YDSPHLP Normal USROPT, (*HLPFULL,*HLPWDW,*USRPRF)
	Desc	
	Type	*CHAR
	Length	10
	Value	*HLPFULL

YMHPTYKA	Text	YDSPHLP Default Keys Help Label.
-----------------	-------------	----------------------------------

Technical Reference Manual – Data Areas

Desc	
Type	*CHAR
Length	10
Value	FUNCK

YMHPYWA

Text	YDSPHLP Window default size directive.
Desc	
Type	*CHAR
Length	7
Value	38 11 Y

YWWDBDA

Text	YWBDBCK, YWBDCLR, YWBDCHR: Window border attr 3.0
Desc	
Type	*CHAR
Length	10
Value	B.:.:.::

YYCOTXA

Text	Company name (YDSPMNU, YDSPHLP).
Desc	
Type	*CHAR
Length	40
Value	EXTOL Integrator

Y2DTFMA

Text	YAPPOBJ YDATFMT Date display format (DMY,YMD,MDY)
Desc	
Type	*CHAR
Length	3

Technical Reference Manual – Data Areas

Y2WSTOA

Value	MDY
Text	YAPPOBJ Workstation timeout display information
Desc	
Type	*CHAR
Length	50
Value	This text displayed from data area Y2WSTOA

Z

ZJUMPBACK	Text	Max number of backward IF jumps in script
	Desc	
	Type	*DEC
	Length	9 0
	Value	1000

ZRTNALTP	Text	Return codes to cause use of alternate ports
	Desc	
	Type	*CHAR
	Length	70
	Value	*OPNICE*ACQICE*RDICE0*WRICE0*DIAL